

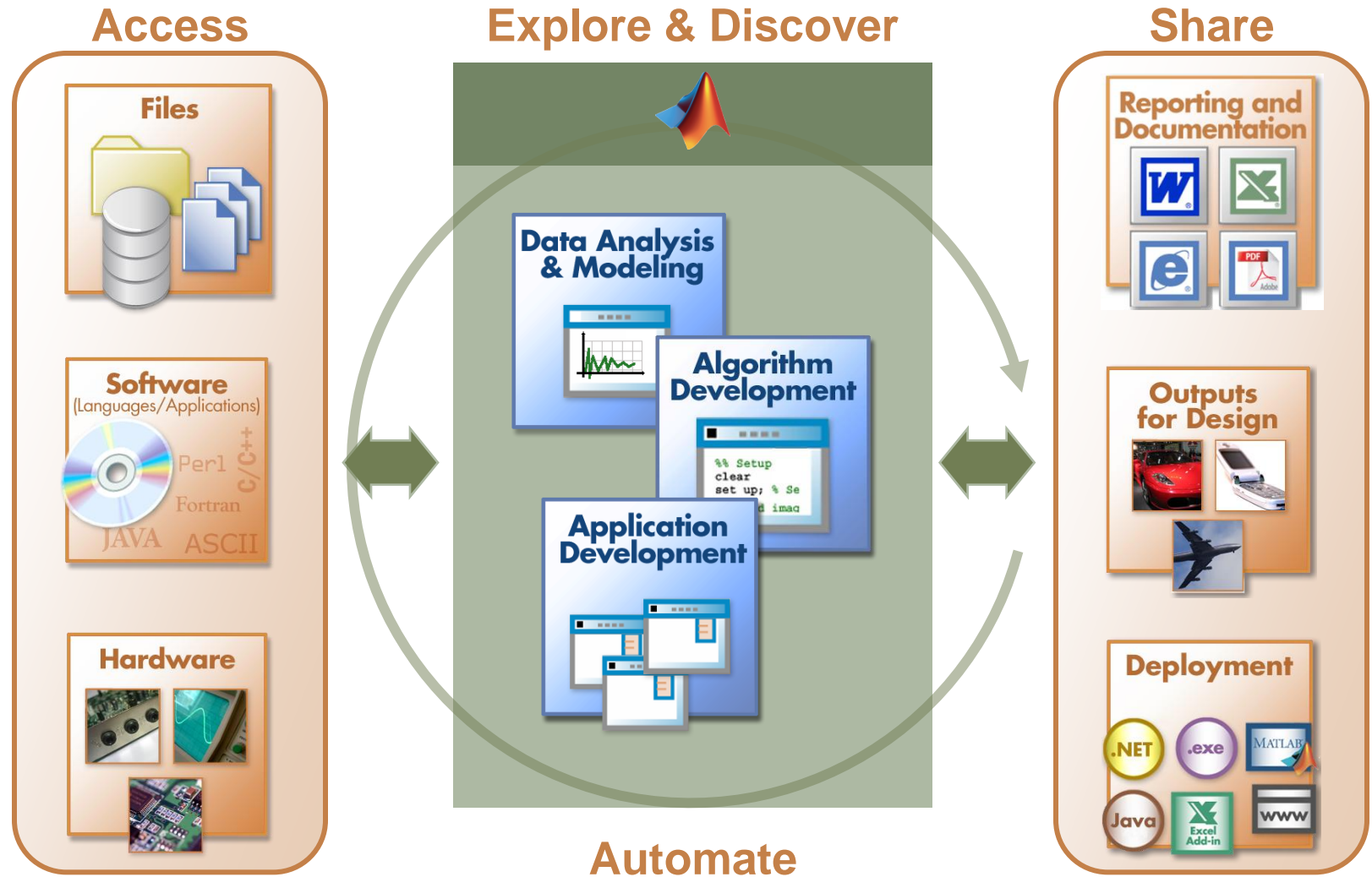
Using MATLAB® for Data Acquisition, Instrument Control, and Data Analysis

Isaac Noh
Application Engineer

MathWorks Symposium

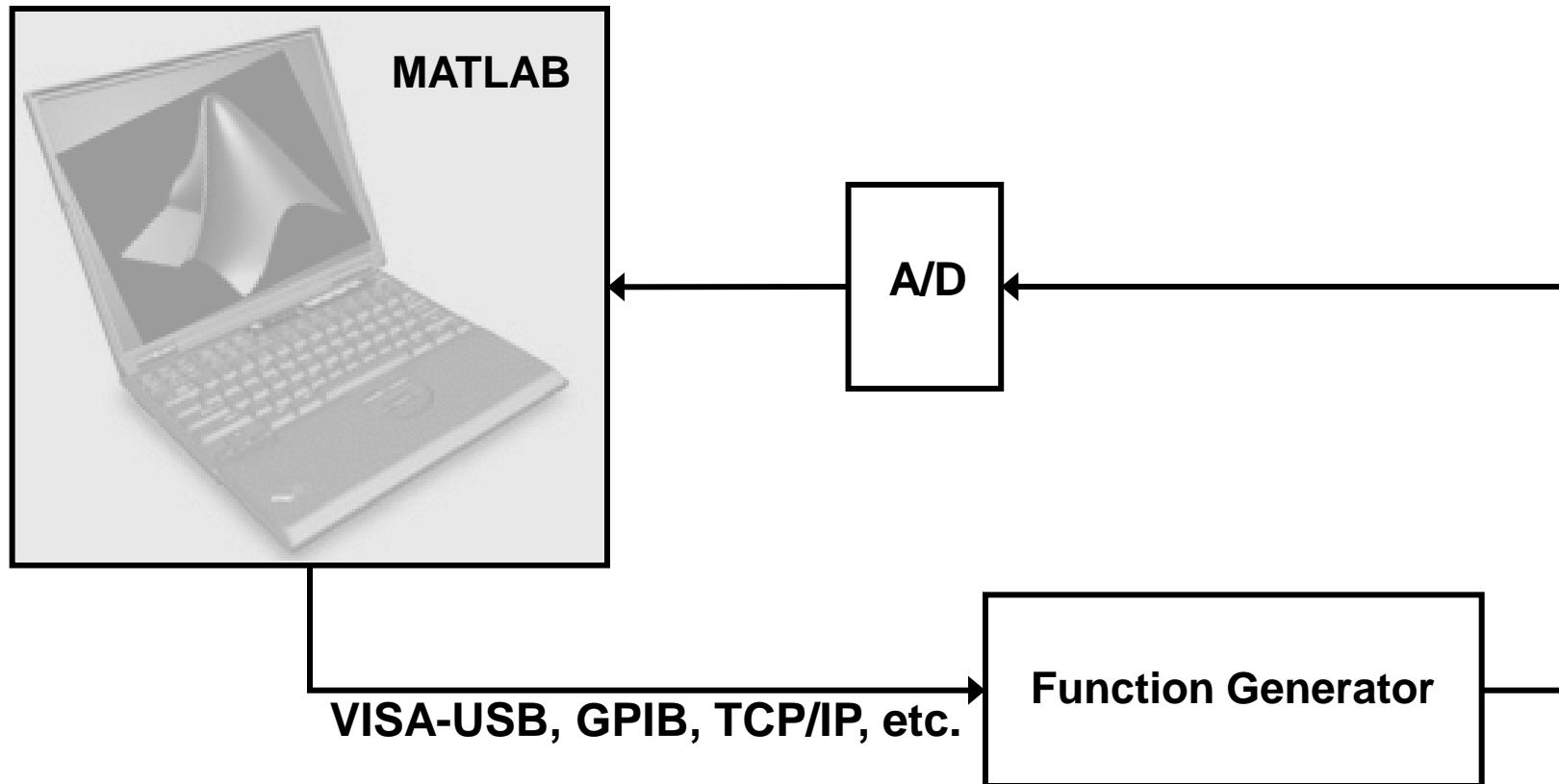
Adopting Model-Based Design
within Aerospace and Defense

Technical Computing Workflow

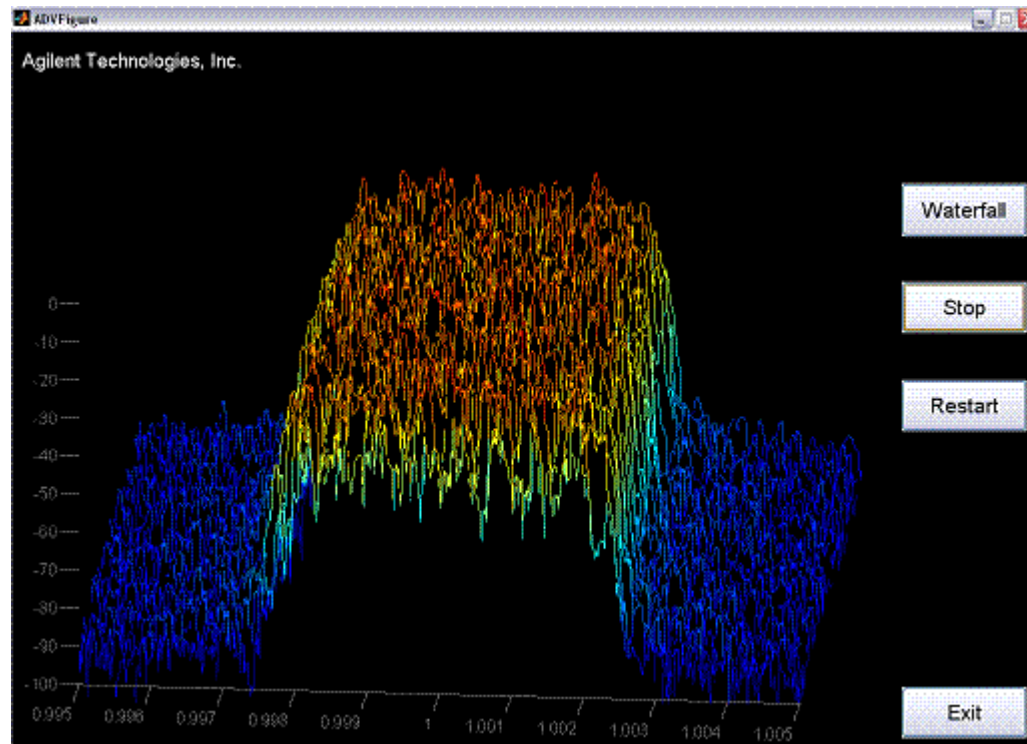


Demonstration:

Instrument Control and Data Acquisition



Demonstration: *Advanced Visualization Tool*



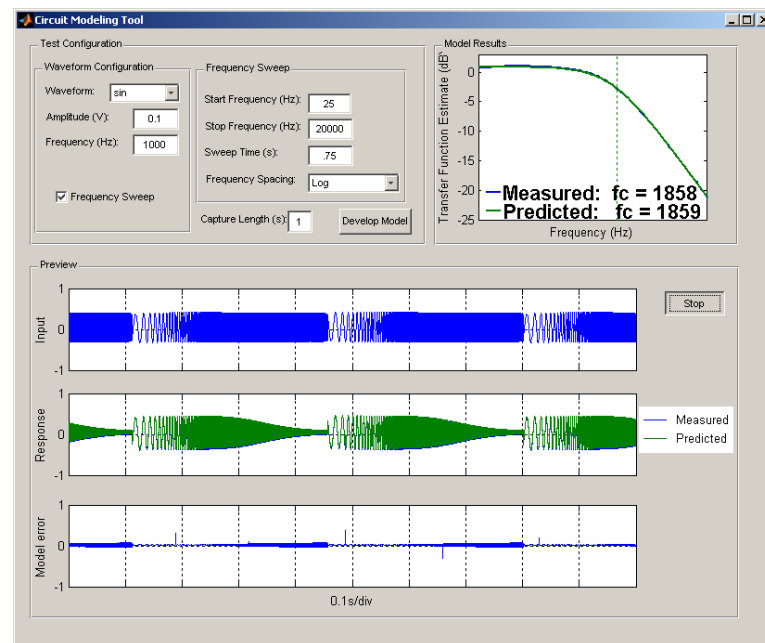
Building an Analysis Application with MATLAB

Access

Explore & Discover

Share

- Write reusable functions
- Leverage development tools to improve:
 - Code quality
 - Performance
 - Supportability
- Add a graphical user interface
 - Use pre-defined dialog boxes (select files, print graphics, ...)
 - Develop a complete custom graphical user interface



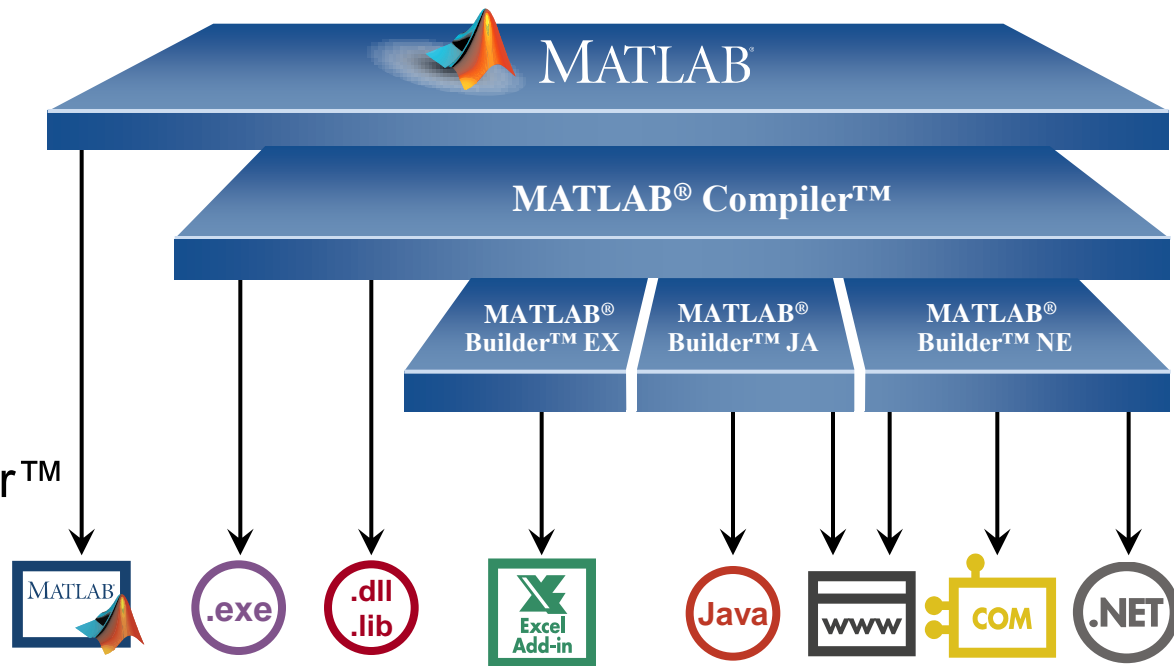
Deploying Applications with MATLAB

Access

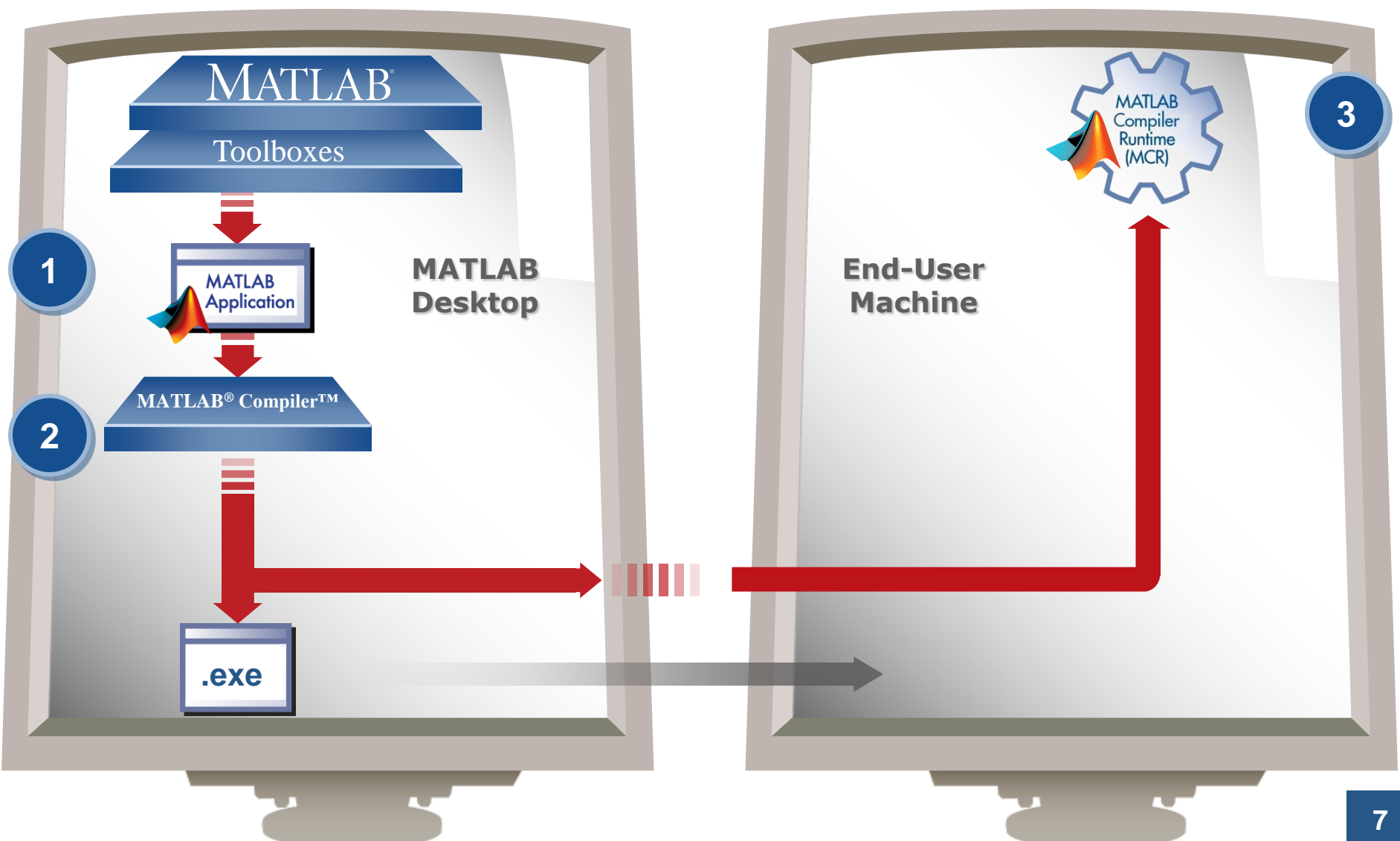
Explore & Discover

Share

- Give MATLAB® code to other users
- Share applications with end users who do not have MATLAB
 - Use MATLAB® Compiler™ to create stand-alone executables and shared libraries
 - Use Compiler add-ons to create software components



Deploying Applications with MATLAB®



MATLAB Connects to Your Hardware Devices

Instrument Control Toolbox

Instruments and RS-232 serial devices



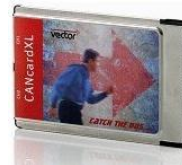
Data Acquisition Toolbox

Plug-in data acquisition devices and sound cards



Image Acquisition Toolbox

Image capture devices



Vehicle Network Toolbox

Vector CAN bus interface devices

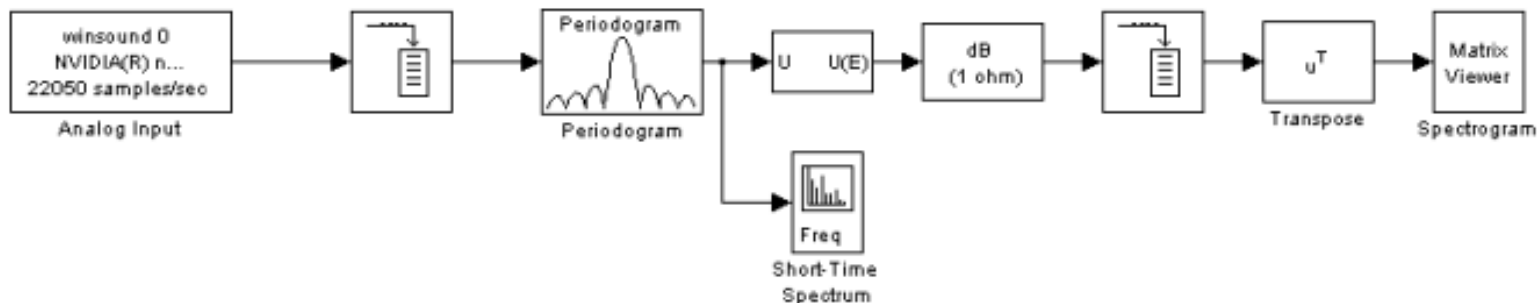
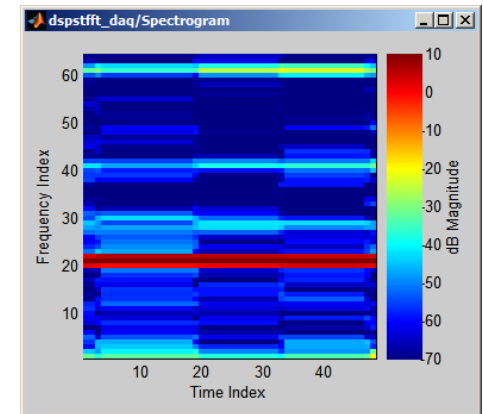
MATLAB

Interfaces for communicating with everything



Acquiring Live Data into Simulink

- Acquire live or measured data directly into Simulink® models from hardware
- Directly evaluate your Simulink algorithms against real-world data
- Support provided by Data Acquisition Toolbox, Instrument Control Toolbox, and Image Acquisition Toolbox



How Do I Get Started with Test and Measurement in MATLAB?

- For more information, watch the recorded webinar: *Acquiring Live Data into MATLAB® for Analysis* www.mathworks.com/wbnr11882.
- To discuss using MATLAB for test and measurement applications in your organization, receive technical literature, request a trial, or arrange an on-site MathWorks visit, please contact:

Byron Geannopoulos
Test and Measurement Sales
508-647-4630
bgeannop@mathworks.com

Or contact your company's MathWorks account manager.

